

Directions to Erwin Technical Center

From I-4 Westbound

Take Exit 6 (US 92 West/ US 301/ Hillsborough Ave)

Merge onto Hillsborough Ave.

Continue 4.3 miles

Erwin is on the North side of the road. Turn right onto 20th Street.

Parking is on the right, in front of the school (Is full by 8:30 AM)
or

Parking is also available in a separate lot on the left side of 20th street

From I-275 Northbound

Take Exit 30A (US92 East/ Hillsborough Ave)

Bear right at the end of the exit.

Continue 1.0 mile

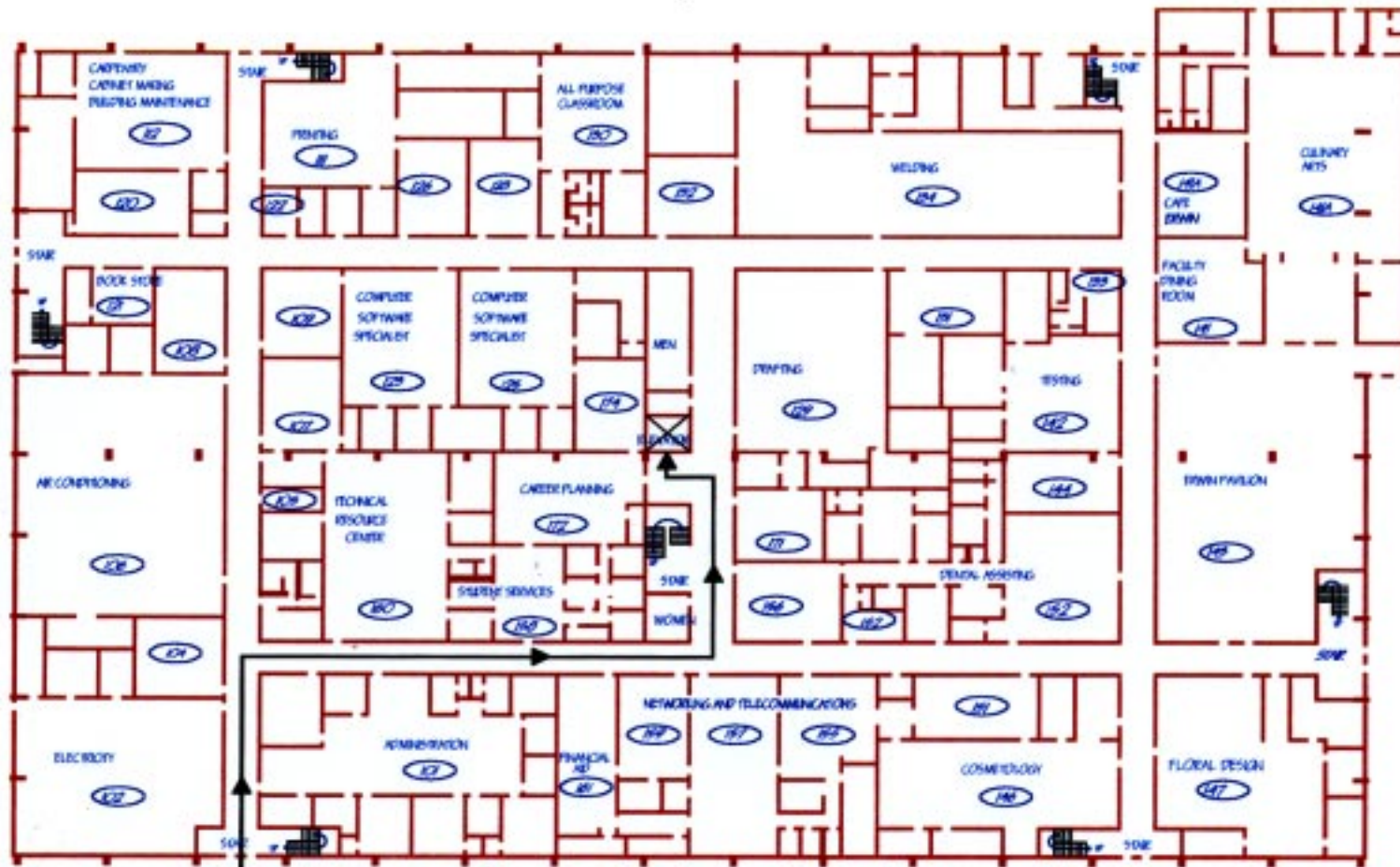
Erwin is on the North side of the road. Turn left onto 20th Street.

Parking is on the right, in front of the school (Is full by 8:30 AM)
or

Parking is also available in a separate lot on the left side of 20th



ERWIN TECHNICAL CENTER FIRST FLOOR



ENTER BUILDING HERE

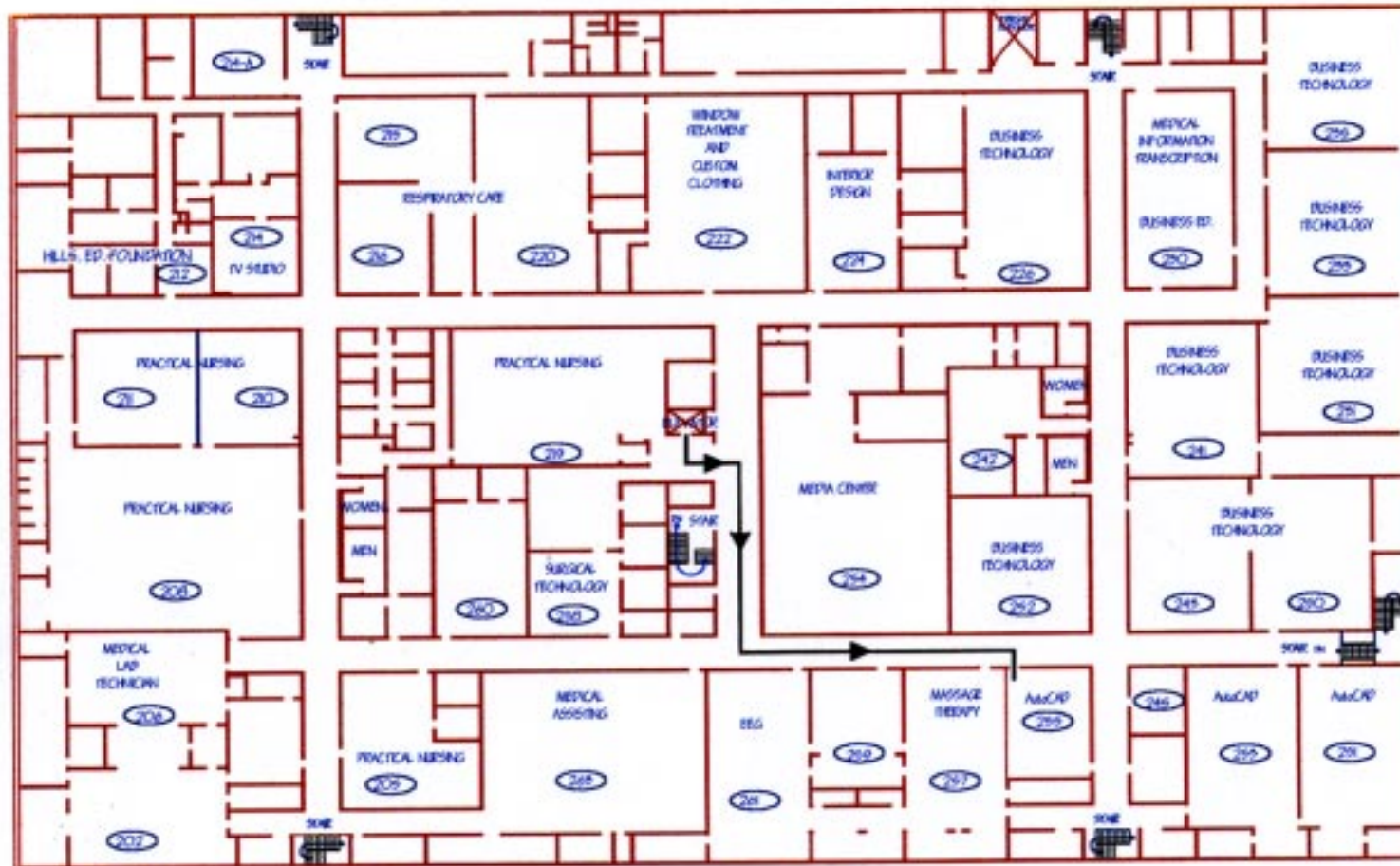
101 - ADMINISTRATION
102 - ELECTRICITY
106 - AIR CONDITIONING
11 - PRINTING
12 - CABINETRY, CABINET MAKING, BUILDING MAINTENANCE
13 - BOOK STORE
123 - COMPUTER SOFTWARE SPECIALIST
129 - COMPUTER SOFTWARE SPECIALIST

129 - DRAFTING
130 - ALL PURPOSE CLASSROOM
134 - WELDING
141 - FACILITY PRINTING ROOM
14A - CULINARY ARTS
142 - TESTING
145 - ERWIN FAULLEN
146 - COSMETOLOGY

147 - FLORAL DESIGN
152 - DENTAL ASSISTING
159 - NETWORKING AND TELECOMMUNICATIONS
157 - NETWORKING AND TELECOMMUNICATIONS
150 - STUDENT SERVICES
159 - NETWORKING AND TELECOMMUNICATIONS
160 - TECHNICAL RESOURCE CENTER
161 - FINANCIAL AID
172 - CAREER PLANNING



ERWIN TECHNICAL CENTER SECOND FLOOR



206 - MEDICAL LAB TECHNIQ
 208 - PRACTICAL NURSING
 (ALSO 206, 21, 210, 219)
 212 - HILLS, ED. FOUNDATION
 220 - RESPIRATORY CARE
 222 - CUSTOM CLOTHING &
 WINDOW TREATMENT
 224 - INTERIOR DESIGN SERVICES

226 - BUSINESS TECHNOLOGY
 250 - MEDICAL INFORMATION TRANSCRIPTION
 259 - BUSINESS TECHNOLOGY
 258 - BUSINESS TECHNOLOGY
 25 - BUSINESS TECHNOLOGY
 24 - BUSINESS TECHNOLOGY
 242 - BUSINESS TECHNOLOGY
 245 - BUSINESS TECHNOLOGY
 250 - BUSINESS TECHNOLOGY

291 - A&C/P
 295 - A&C/P
 295 - A&C/P
 292 - BUSINESS TECHNOLOGY
 294 - MEDIA CENTRE
 297 - MASSAGE THERAPY
 298 - SURGICAL TECHNOLOGY
 24 - EEG
 245 - MEDICAL ASSISTING

